

### Braided Cord #60313

#### What's Inside

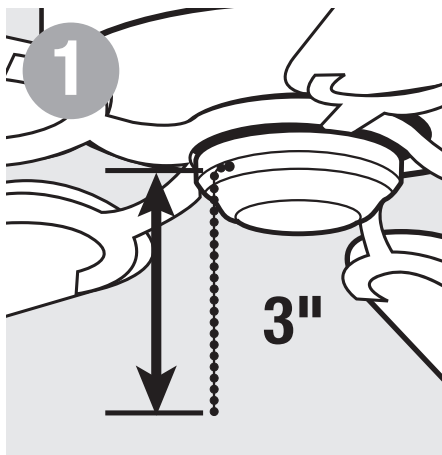
1 – 3" Braided Cord with End Bell and Connector

#### What's Its Purpose

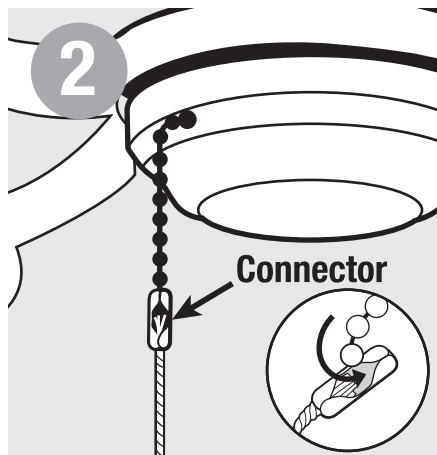
Turning lamp or ceiling fan on and off.

#### Warning

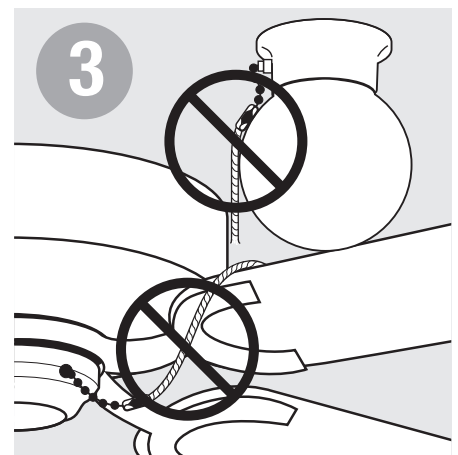
- Before beginning **TURN OFF POWER** to light from fuse or circuit breaker.
- Follow local electrical regulations or codes when installing and using this product.



To attach use 3" of existing chain from fixture.



Snap connector from braided cord over last bead of existing chain.



After installation make sure braided cord does not rest against lamp or interfere with fan.