

**Works for Jandorf Beaded Chains:**

- #60324 - 3' #6 Beaded Chain - Brushed Pewter
- #60352 - 3' #6 Beaded Chain - Rustic Bronze
- #60361 - 5' #6 Beaded Chain - Brass
- #60371 - 3' #6 Beaded Chain - Black
- #60373 - 3' #6 Beaded Chain - White
- #60377 - 3' #6 Beaded Chain - Antique Brass
- #94991 - 3' #6 Beaded Chain - Nickel Plated Steel
- #94992 - 3' #6 Beaded Chain - Brass Plated Steel
- #94993 - 3' #6 Beaded Chain - Solid Brass
- #94995 - 3' #10 Beaded Chain - Nickel Plated Brass

**What's Its Purpose**

Turning lamp or ceiling fan on and off.

**Works for Jandorf Connectors:**

- #60351 - #6 Chain Connectors - Rustic Bronze
- #60353 - #6 Chain Connectors - Brass
- #60354 - #6 Chain Connectors - Nickel Plated
- #60358 - #10 Chain Connectors - Nickel Plated
- #60370 - #6 Chain Connectors - Black
- #60372 - #6 Chain Connectors - White
- #60374 - #6 Chain Connectors - Brushed Pewter
- #60376 - #6 Chain Connectors - Antique Brass

**What's Its Purpose**

Link together two beaded chains.

**Works for Jandorf Bells:**

- #60355 - #6 Bells - Brass
- #60360 - #10 Bells - Nickel Plated
- #60375 - #6 Bells - Nickel Plated

**What's Its Purpose**

Decorative attachment for end of beaded chain.

**Works for Jandorf Couplings:**

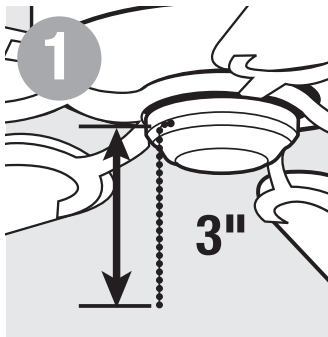
- #60356 - #6 Couplings - Brass
- #60357 - #6 Couplings - Nickel Plated
- #60359 - #10 Couplings - Nickel Plated

**What's Its Purpose**

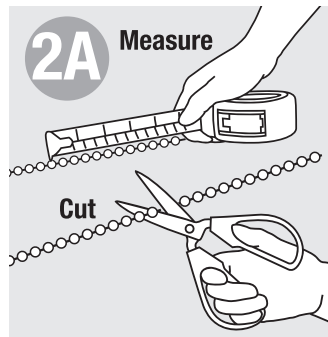
Secure beaded chain with a fastener.

**Warning**

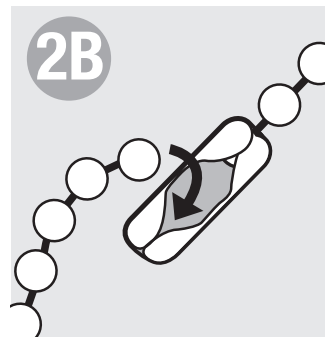
- Before beginning **TURN OFF POWER** to light from fuse or circuit breaker.
- Follow local electrical regulations or codes when installing and using this product.



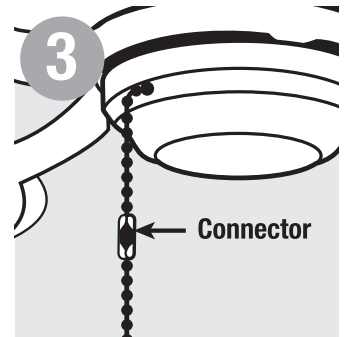
To attach use 3" of existing chain from fixture.



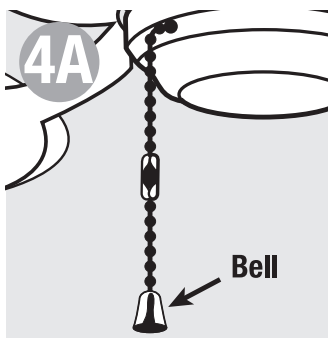
Determine length of new pull chain. Cut or add additional chain.



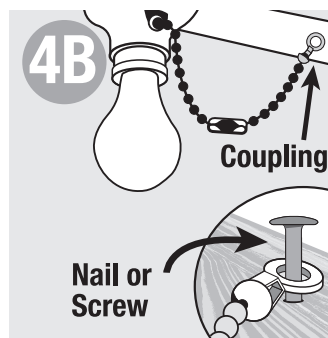
At the end of one beaded chain, snap last bead of chain into connector. Connect an additional chain by snapping connector onto last bead of second chain.



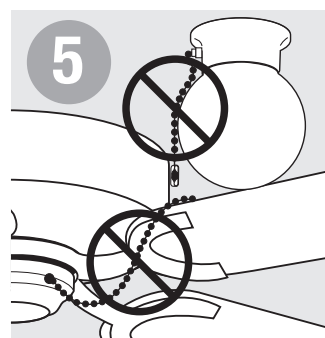
Snap connector from pull chain over last bead of existing chain.



Snap bell onto end of beaded chain.



Snap coupling to last bead on beaded chain. Attach coupling to surface with fastener.



After installation make sure chain does not rest against lamp or interfere with fan.