

## All-Purpose Crossbar #60202

### What's Inside

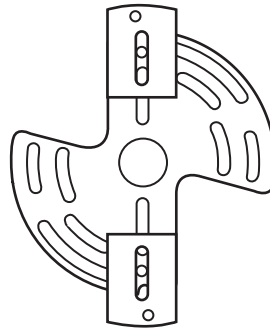
- 1 – All-Purpose Crossbar –  
Adjustable from 3 7/8" to 5" (A)
- 2 – 1/2" Mounting Screws (B)
- 2 – 3/4" Mounting Screws (C)

### What's Its Purpose

Mounting light fixtures to 3", 3 1/4" or 4" electrical boxes.

### What's Needed

- Wire Nuts
- Screwdriver
- Wire Insulation Stripper
- Pliers



A



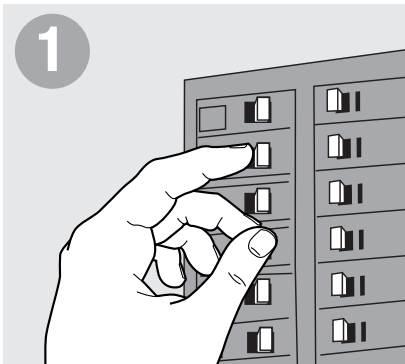
B



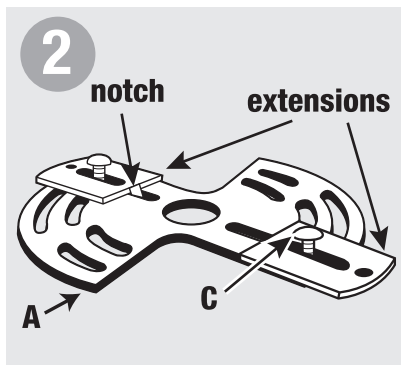
C

### Warning

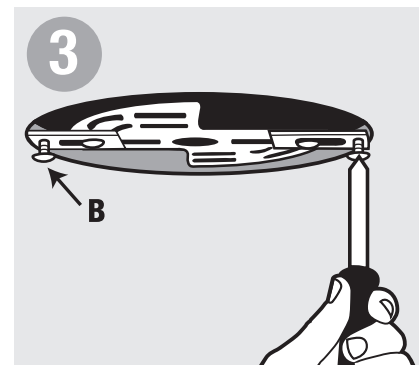
- Before beginning **TURN OFF POWER** to the light from the fuse or circuit breaker.
- Follow local electrical regulations or codes when installing and using this product.
- When installing fixture directly to outlet box, outlet box must be capable of supporting 50 lbs. and be supported by the building structure.



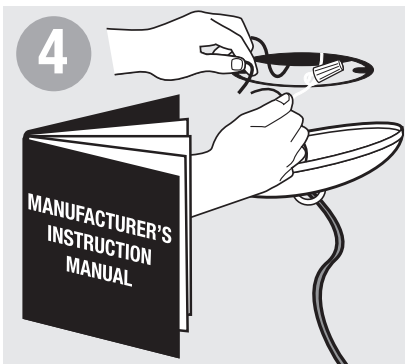
Before beginning **TURN OFF POWER** to light from fuse or circuit breaker.



Line up notch on extension with notch on bar. Insert 3/4" screw (C) into slot on each extension and hand tighten into holes on crossbar (A). Adjust length of extensions as needed.



Insert 1/2" screws (B) into each hole on extension and align with holes in electrical box. Tighten all screws.



Securely install fixture following manufacturer's instructions.