

Lamp Cord Clip-In Socket #60138

What's Inside

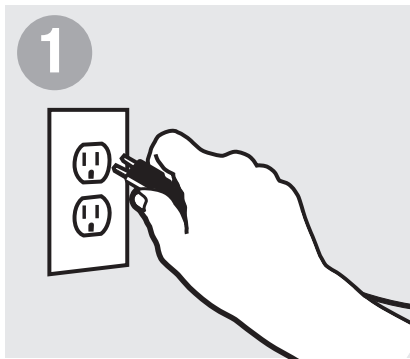
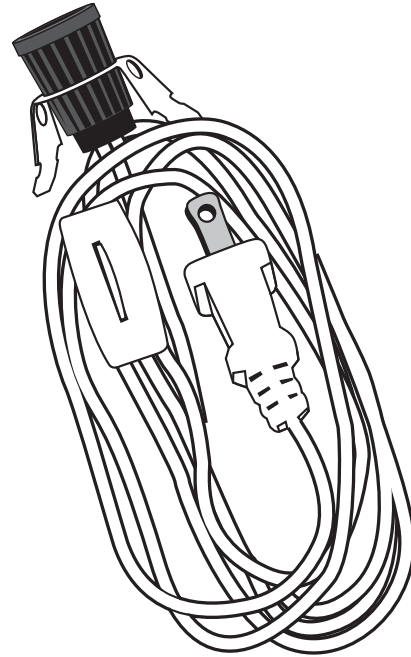
1 – 6' SPT-1 Lamp Cord (18 Gauge) with On/Off Switch,
Candelabra Base Clip-in Socket, and Polarized Plug – White

What's Its Purpose

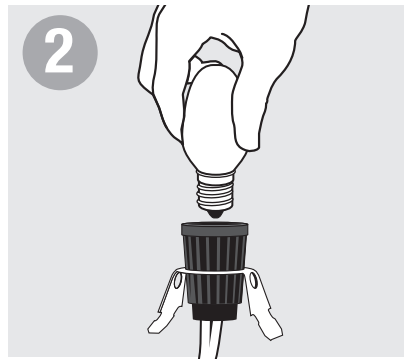
Lights up crafts and ceramic houses.

Warning

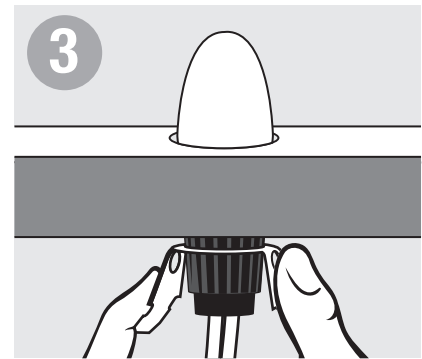
- Before beginning **TURN OFF POWER** by unplugging cord from wall outlet.
- Follow local electrical regulations or codes when installing and using this product.
- Object to hold the light must be solidly built and self-supporting.
- Light bulb not to exceed 75 watts.



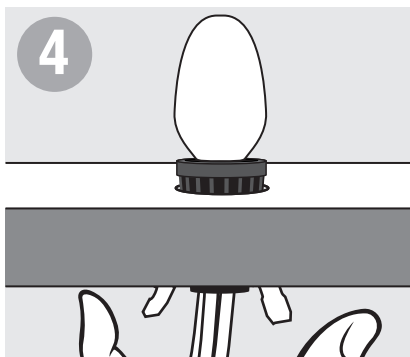
Before beginning **TURN OFF POWER** by unplugging cord from wall outlet.



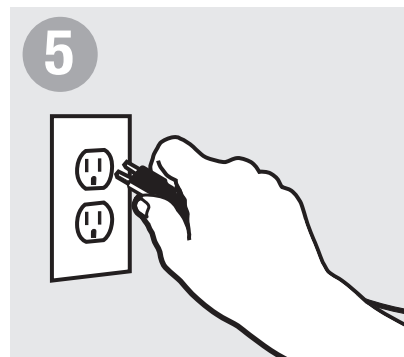
Depending on your application, either install light bulb before beginning, or after Step 4.



Lightly squeeze metal clamp on socket and insert into a 1" diameter hole.



Loosen hold on clamp to secure in hole.



Plug into outlet.