

## Works for Jandorf Loops:

- #60242 – 1 3/8" Diameter Female Loop 1/8 IP – Brass Finish
- #60243 – 1" Diameter Male Loops 1/8 IP – Brass Finish  
 1" Diameter Female Loops 1/8 IP – Brass Finish

## What's Its Purpose

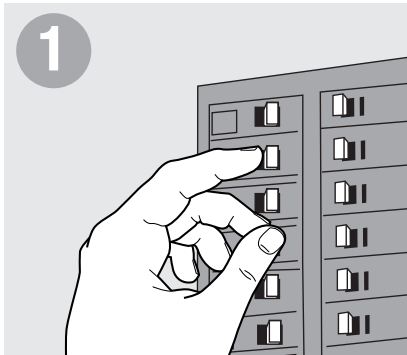
Decorative piece used for hanging fixtures.

## Warning

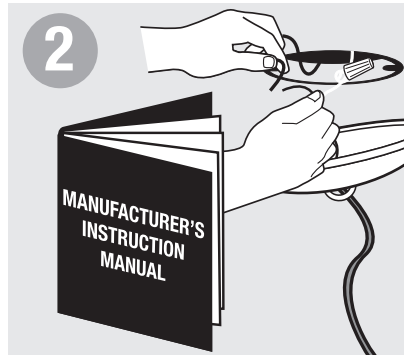
- Before beginning **TURN OFF POWER** to the light from the fuse or circuit breaker.
- Follow local electrical regulations or codes when installing and using this product.
- Outlet box must be capable of holding up to 50 lbs.

## What's Needed

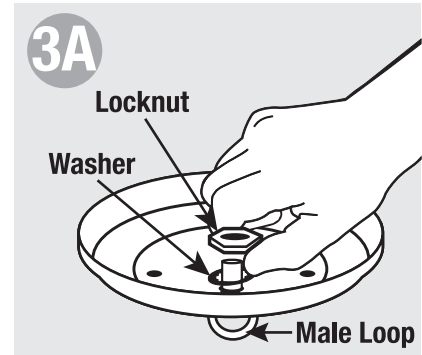
- Locknut
- Washer
- Canopy



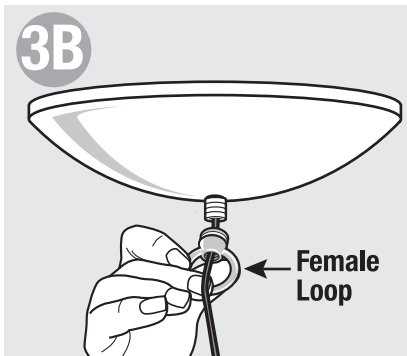
**1** Before beginning **TURN OFF POWER** to light from fuse or circuit breaker.



**2** Follow manufacturer's instructions for installing fixture.



**3A** **Canopies supported by screws:** Insert male loop into bottom of canopy and attach with washer and locknut from inside.



**3B** **Canopies supported by nipple:** Attach female loop to nipple that is connected to crossbar.