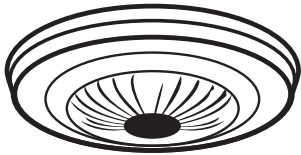


Canopy #60212

What's Inside

1 – 5" Antique Brass Canopy 1-1/16" Center Hole (A)



A

What's Needed

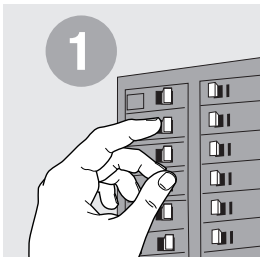
Screw Collar Loop
 Crossbar
 Mounting Hardware
 Wire Nuts
 Screwdriver
 Wire Insulation Stripper
 Pliers

What's Its Purpose

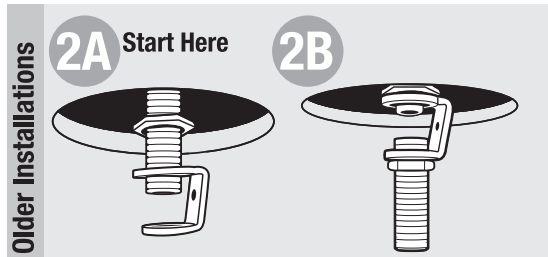
Decorative piece used with screw collar loop to cover outlet box and hang ceiling fixture.

Warning

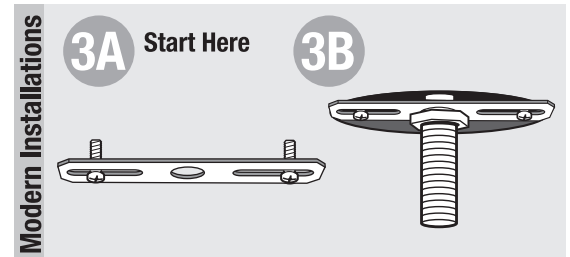
- Before beginning **TURN OFF POWER** to the light from the fuse or circuit breaker.
- Follow local electrical regulations or codes when installing and using this product.
- When installing fixture directly to outlet box, the outlet box must be capable of supporting 50 lbs. and be supported by the building structure.
- **CAUTION: RISK OF ELECTRIC SHOCK. RISK OF FIRE.**



Before beginning **TURN OFF POWER** to light from fuse or circuit breaker.



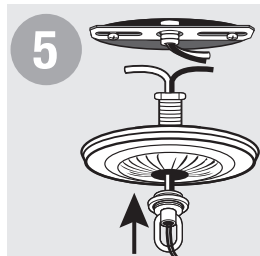
3/8 IP nipple at outlet box: Screw 3/8 IP lock nut onto existing nipple. Thread larger side of hickey onto existing nipple, resting against lock nut. Screw 1/4 IP x 1 1/2" nipple into other end of hickey. Thread 1/4 IP lock nut onto nipple until it rests against hickey.



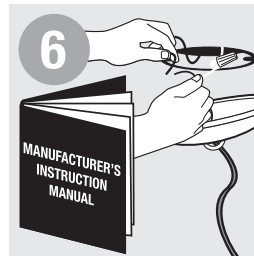
With raised side of crossbar towards ceiling, mount crossbar by inserting 1/2" mounting screws through slotted holes. Screw 1/4 IP x 1 1/2" nipple into the crossbar. Thread 1/4 IP lock nut onto nipple until it rests against crossbar.



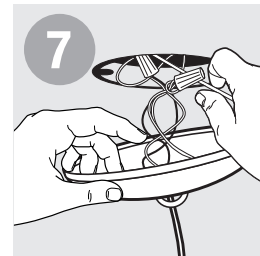
Check fit, cover outlet box with canopy and secure with screw collar loop. If needed, adjust nipple so canopy rests against ceiling after installation. Remove.



Pass wires from fixture up through screw collar loop to inside of canopy.



While supporting the fixture, attach wires according to manufacturer's instructions.



Continue to support the fixture. Make sure all connected wires are carefully placed inside box and canopy.



Cover with canopy and secure with screw collar loop.