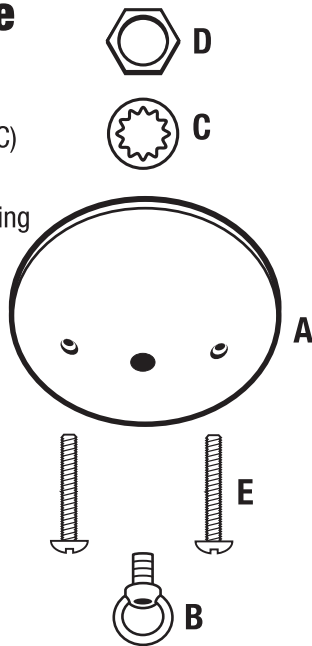


Canopy Kit #60211

What's Inside

- 1 – 5" White Canopy (A)
- 1 – 1" Loop 1/8 IP (B)
- 1 – 1/8 IP Lock Washer (C)
- 1 – 1/8 IP Lock Nut (D)
- 2 – 8-32 X 1 1/2" Mounting Screws (E)



What's Needed

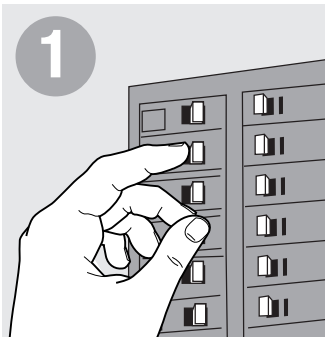
- Crossbar
- Wire Nuts
- Screwdriver
- Wire Insulation Stripper
- Pliers

What's Its Purpose

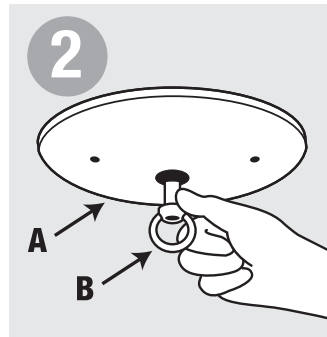
Decorative piece used to cover outlet box and hang ceiling fixture.

Warning

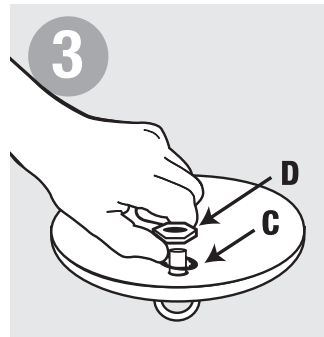
- Before beginning **TURN OFF POWER** to the light from the fuse or circuit breaker.
- Follow local electrical regulations or codes when installing and using this product.
- When installing fixture directly to outlet box, the outlet box must be capable of supporting 50 lbs. and be supported by the building structure.
- **CAUTION: RISK OF ELECTRIC SHOCK. RISK OF FIRE.**



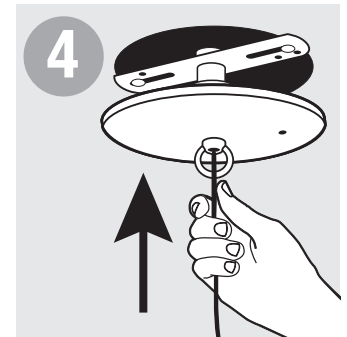
Before beginning **TURN OFF POWER** to the light from fuse or circuit breaker.



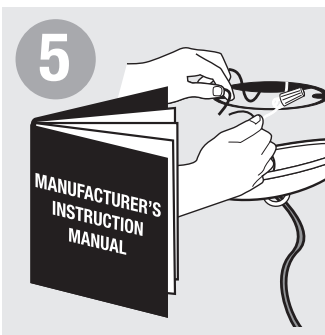
Insert loop (B) into hole from outside of canopy (A).



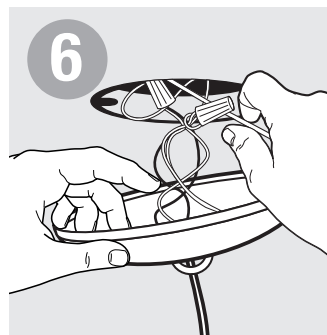
Secure from inside of canopy with washer (C) followed by nut (D). Tighten.



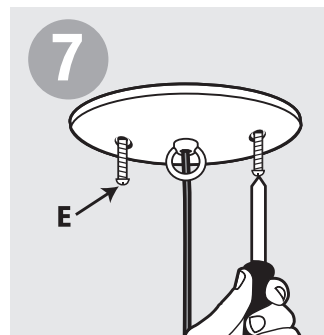
Pass wires from fixture up through hole in loop to inside of canopy.



While supporting the fixture, attach wires to according to manufacturer's instructions.



Continue to support fixture. Make sure all connected wires are carefully placed inside of box and canopy.



Cover with canopy and secure with mounting screws (E).