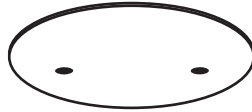


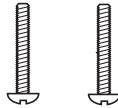
Blank-up Kit #60220

What's Inside

- 1 – 4 3/4" White Blank-up Cover (A)
- 2 – 8-32 X 3/4" White Screws (B)



A



B

What's Needed

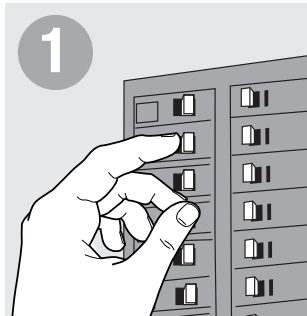
- Wire Nuts
- Screwdriver
- Wire Insulation Stripper
- Pliers

What's Its Purpose

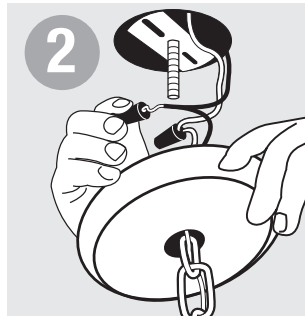
Decorative piece used to cover the outlet box after removal of an existing fixture. For this to mount properly, the electrical box must have mounting holes 3 1/2" apart.

Warning

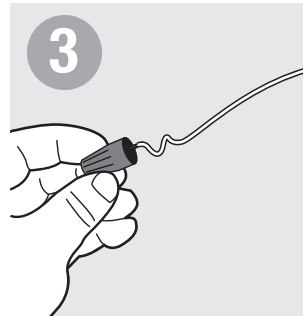
- Before beginning **TURN OFF POWER** to the light from the fuse or circuit breaker.
- Follow local electrical regulations or codes when installing and using this product.
- When installing fixture directly to outlet box, the outlet box must be capable of supporting 50 lbs. and be supported by the building structure.
- **CAUTION: RISK OF ELECTRIC SHOCK. RISK OF FIRE.**



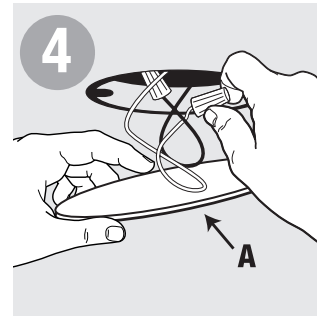
1 Before beginning **TURN OFF POWER** to the light from fuse or circuit breaker



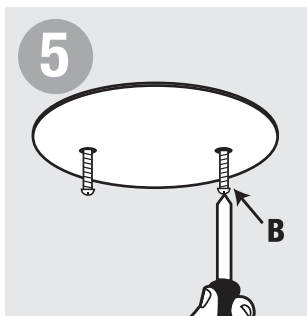
2 Remove fixture from outlet box.



3 Attach wire nuts to end of each conductor wire.



4 Make sure all wires are placed carefully inside box. Cover with blank-up cover (A).



5 Secure cover to outlet box with screws (B) until flush with ceiling. If cover does not sit flush with ceiling, adjust outlet box stud as necessary.