

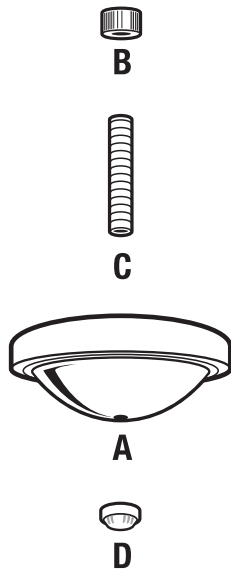
Blank-Up Kit #60218

What's Inside

- 1 – 5" White Blank-Up Canopy (A)
- 1 – 3/8 IP X 1/8 IP Reducer (B)
- 1 – 1/8 IP X 2 1/2" Nipple (C)
- 1 – 1/8 IP White Plastic Cap Nut (D)

What's Needed

- Wire Nuts
- Screwdriver
- Wire Insulation Stripper
- Pliers

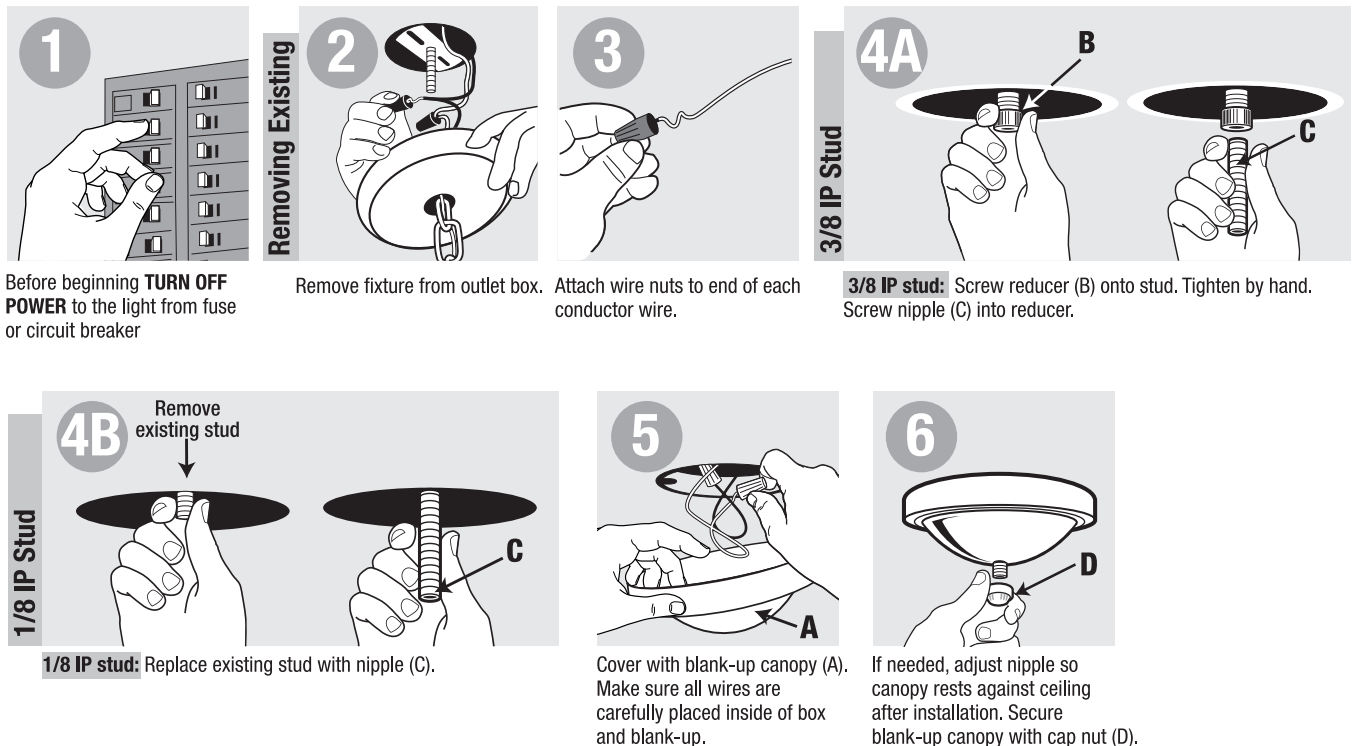


What's Its Purpose

Decorative piece used to cover the outlet box after removal of an existing fixture.

Warning

- Before beginning **TURN OFF POWER** to the light from the fuse or circuit breaker.
- Follow local electrical regulations or codes when installing and using this product.
- When installing fixture directly to outlet box, the outlet box must be capable of supporting 50 lbs. and be supported by the building structure.
- **CAUTION: RISK OF ELECTRIC SHOCK. RISK OF FIRE.**



1 Before beginning **TURN OFF POWER** to the light from fuse or circuit breaker

2 **Removing Existing**
Remove fixture from outlet box.

3 Attach wire nuts to end of each conductor wire.

4A **3/8 IP Stud**
Screw reducer (B) onto stud. Tighten by hand. Screw nipple (C) into reducer.

4B **1/8 IP Stud**
Remove existing stud. Replace existing stud with nipple (C).

5 Cover with blank-up canopy (A). Make sure all wires are carefully placed inside of box and blank-up.

6 If needed, adjust nipple so canopy rests against ceiling after installation. Secure blank-up canopy with cap nut (D).